

POOL FROG®

Mineral Pool Care System

Model 5400/5430

For Pools up to 40,000 Gallons



Adopt A FROG® for Worry-Free Water!

- Less work with no daily dosing.
- Reduces chlorine use up to 50%.*
- Adopt an easier, more fun pool environment.

**Compared to the minimum EPA recommended chlorine level of 1.0 ppm for a stabilized swimming pool.*



System Includes the
POOL FROG® Mineral Reservoir
Patented Mineral Disinfectant

Customer Service 800-222-0169
www.kingtechnology.com

TABLE OF CONTENTS

POOL FROG® Introduction	3
Swimming Pool Tips	4
Start-up and Operation	5-6
Replacing POOL FROG® Mineral Reservoir	7
Using FROG BAM®	8
Using POOL FROG® Bac Pac	9
Troubleshooting	10
Parts List	11
Replacing Control Dial O-Rings	12
Replacing Cap O-Rings and Knobs	12
Winterizing	13
In-line Installation	14
Off-line Installation	15-16
For Proper Performance	17
Warranty	18

For information on King Technology's entire product line, visit our website at www.kingtechnology.com

POOL FROG®

Welcome to easier pool care courtesy of POOL FROG®. With POOL FROG®, your pool water will look and feel better without a lot of work or a lot of chlorine. This system† controls bacteria using a combination of minerals and reduced chlorine levels—up to 50%* less. There are 4 parts to the POOL FROG® System: The In Ground POOL FROG® Cyclor, the POOL FROG® Mineral Reservoir, FROG BAM® 90-day Algae Preventative and the POOL FROG® Bac Pac.

Part 1 POOL FROG® Cyclor

The water treatment center that controls the flow of water to each part of the POOL FROG® System.



For In Ground Pools
up to 40,000 gallons.

Part 2 POOL FROG® Mineral Reservoir

Holds the minerals and fits inside the POOL FROG® Cyclor.



Part 3 FROG BAM®

Use with the POOL FROG® System for an Algae-Protection Guarantee.



Part 4 POOL FROG® Bac Pac

Pre-filled with chlorine tablets and fits inside the POOL FROG® Mineral Reservoir.



(POOL FROG® Mineral Reservoir sold inside POOL FROG® Mineral Cyclor and separately for replacements.
POOL FROG® Bac Pac and FROG BAM® sold separately.)

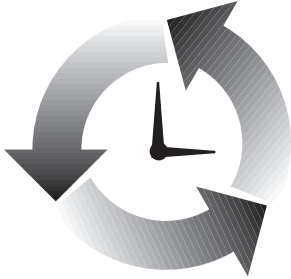
†FROG® Mineral System consists of the FROG® minerals silver chloride and carbonate used in conjunction with 0.5 ppm chlorine. The FROG® Mineral Reservoir must be used in conjunction with the FROG® Bac Pac (EPA Reg. No.: 53735-2), an EPA registered chlorine pool product or a chlorine delivery device.

*Compared to the minimum EPA recommended chlorine level of 1.0 ppm for a stabilized swimming pool.

Swimming Pool Tips

Start-up and Yearly Maintenance

1.



Make sure the pool has adequate circulation. The pool water must completely circulate through the pump and filter at least 1 to 2 times per day. This usually requires 8 to 12 hours. Check with your dealer for the proper circulation time for your pool.

2.

Before beginning with any pool care program, you must first balance your pool water. Take a water sample to your local pool professional or use a complete test kit that will test for the following important elements.

Water Balance Guidelines

pH:	7.2 - 7.8
Total Alkalinity:	60 - 120 ppm
Calcium Hardness:	150 - 400
Total Dissolved Solids:	<1500
Stabilizer:	20 - 80 ppm
Free Chlorine:	0.5 - 1.0 ppm

3.

Cu
Mg Fe

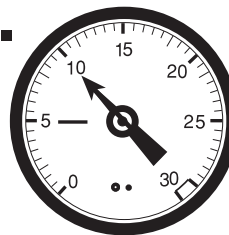
If your fill water is high in metals, use a sequestering agent or metal out product at start-up only before using the POOL FROG® Mineral Reservoir. See your local dealer for details on using these products and always follow manufacturers directions carefully.

4.



After your pool is up and running smoothly, continue to test your water for pH, total alkalinity and chlorine with FROG® Brand Test Strips and maintain its balance by adding any necessary adjustment products (see your dealer for details).

5.

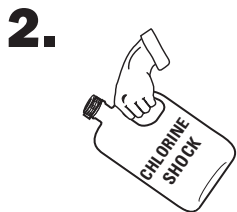


Check the pool's filter gauge often and periodically clean filter per the manufacturer's directions. A dirty filter will slow the flow of water which could hamper proper circulation.

Start-up and Operation



Add a stabilizer or conditioner to the pool at the beginning of the season if the stabilizer level is below 20 ppm. This will prevent chlorine burn off. Follow manufacturer's directions carefully.



Shock the pool with chlorine to rid the water of all contaminants before beginning with POOL FROG®. Follow manufacturer's directions carefully.

THIS STEP IS VERY IMPORTANT TO START-UP. USE CHLORINE SHOCK ONLY.



Do not add shock in or near the skimmer or into the POOL FROG® Cyclor as it could damage equipment, risk potential explosion or discolor your pool surface.

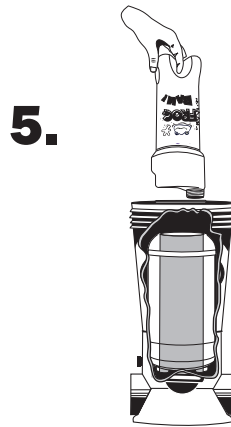


Install a POOL FROG® Mineral Reservoir into the POOL FROG® Cyclor. (Follow directions on page 7.)

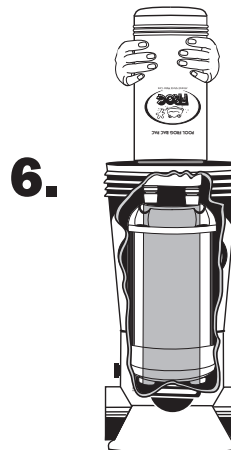
REPLACE THE POOL FROG® MINERAL RESERVOIR EVERY 6 MONTHS OR AFTER ONE POOL SEASON WHICHEVER IS SHORTER.



Replace cap and run POOL FROG® Cyclor, with POOL FROG® Mineral Reservoir inserted, for 10 minutes on Setting MAXIMUM.



For an Algae Protection Guarantee insert FROG BAM® into POOL FROG® Mineral Reservoir in POOL FROG® Cyclor. (Follow directions on page 8.)



When chlorine reading is down to 1.0 ppm, which may take a few days, insert POOL FROG® Bac Pac. (Follow directions on page 9.)

Start-up and Operation

This system is designed to work effectively with a variety of pool equipment as long as the following basic procedures are followed.

7. Set control dial by matching up the parameters of your pool on the chart below. THIS IS A STARTING POINT ONLY and may need to be adjusted to fit your individual pool needs. See #8 below for adjusting directions.

IMPORTANT: Pump-run times of at least 6 hours per day at high speed are recommended for proper performance. If running the pump at low speed only or on high speed less than 6 hours, please follow the 24 hour low-speed directions below.

In Ground POOL SIZE Gallons	SINGLE-SPEED PUMP OR HIGH-SPEED PUMP RUN TIME											
	6 HOUR PUMP RUN TIME				12 HOUR PUMP RUN TIME				24 HOUR PUMP RUN TIME			
	PUMP SIZE				PUMP SIZE				PUMP SIZE			
	3/4 hp	1 hp	1 1/2 hp	2 hp	3/4 hp	1 hp	1 1/2 hp	2 hp	3/4 hp	1 hp	1 1/2 hp	2 hp
7,000	4.0	3.5	3.0	3.0*	3.0	2.5	4.0*	3.5*	1.5	3.5*	3.0*	2.5*
9,000	4.5	4.0	3.5	3.0	3.5	3.0	2.5	4.0*	2.5	4.0*	3.5*	3.0*
12,000	5.0	4.5	4.0	3.5	4.0	3.5	3.0	2.5	3.0	2.5	1.5	3.5*
18,000	NR	5.0	4.5	4.0	5.0	4.0	3.5	3.0	3.5	3.0	2.5	2.0
25,000	NR	NR	5.0	4.0	NR	5.0	4.0	3.5	4.0	3.5	3.0	2.5
30,000	NR	NR	6.0	5.0	NR	5.5	5.0	4.0	4.5	4.0	3.5	3.0
35,000	NR	NR	7.0	6.0	NR	6.5	5.5	5.0	5.5	4.5	4.0	3.5
40,000	NR	NR	NR	7.0	NR	NR	6.5	5.5	6.5	5.5	4.5	4.0

* - Bypass installation recommended. NR - This pump size is not recommended for this size pool.

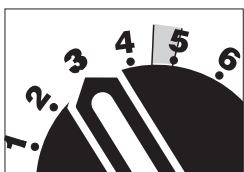
24 HOUR, LOW-SPEED PUMP RUN TIME

In order to ensure proper performance when running the pump on low speed for 24 hours per day or high speed less than 6 hours per day, bleed the air while the pump is on by unscrewing the cap knob until water appears. Then screw the knob back on. Repeat this process each time the cap is removed for any reason. Set the control dial at 6 and follow the adjustment directions in Step 8 to determine the correct setting for your pool.

In Ground POOL SIZE Gallons	6 HOUR PUMP RUN TIME			
	3/4 hp	1 hp	1 1/2 hp	2 hp
7,000	4.0	3.5	3.0	3.0*
9,000	4.5	4.0	3.5	3.0
12,000	5.0	4.5	4.0	3.5
18,000	NR	5.0	4.5	4.0
25,000	NR	NR	5.0	4.0
30,000	NR	NR	6.0	5.0
35,000	NR	NR	7.0	6.0
40,000	NR	NR	NR	7.0

Find your starting dial setting by matching up the parameters of your pool on the above chart. An In ground pool with approximately 18,000 gallons with a 1 horse power pump running 6 hours a day at high speed would require a starting dial setting of 5. Example above.

8. For the first week test the pool water daily for free chlorine with FROG® Brand Test Strips to ensure correct dial setting. Continue to test weekly throughout the season.



After each testing, adjust the dial up by 1/2 increment if the free chlorine reading has dropped below 0.5 ppm or adjust down by 1/2 increment if the reading has risen above 1.0 ppm. Continue this process each day until the free

chlorine reading stabilizes to at least 0.5 ppm. Remember to adjust dial by 1/2 increments only in order to prevent over chlorination which may bleach pool surfaces.

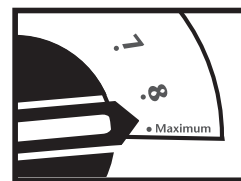
9. Shock pool every two weeks or as needed to maintain water quality. Follow label directions on the shock treatment used.



Do not add shock in or near the skimmer or into the POOL FROG® Cycler as it could damage equipment, risk potential explosion or discolor your pool surface.

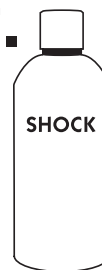
If using another means of chlorine support, follow steps 1-5 on page 5 then continue below.

6.



Set dial to Maximum. Maintain a minimum chlorine reading of 0.5 ppm with a chlorine delivery device or hand feeding.

7.



Shock pool every two weeks or as needed to maintain water quality. Follow label directions on the shock treatment used.



Do not add shock in or near the skimmer or into the POOL FROG® Cycler as it could damage equipment, risk potential explosion or discolor your pool surface.

Replacing a POOL FROG® Mineral Reservoir

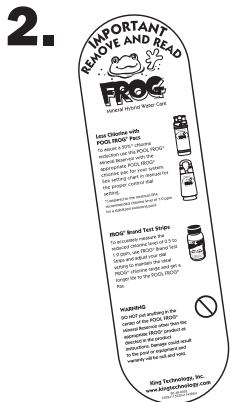
(POOL FROG® Mineral Reservoirs **MUST** be Replaced Every Season)



1. IN GROUND SERIES 5400 (Order #01-12-5462)
NOW FITS THE FOLLOWING CYCLERS:
 POOL FROG Series 5400 or 5600
 Prevail Series 5790

Check the top of the box and back label of product to make sure you have the correct POOL FROG® Mineral Reservoir to fit your POOL FROG® Cycler.

THE POOL FROG® MINERAL RESERVOIR MUST BE REPLACED EVERY 6 MONTHS OR AFTER ONE POOL SEASON WHICHEVER IS SHORTER

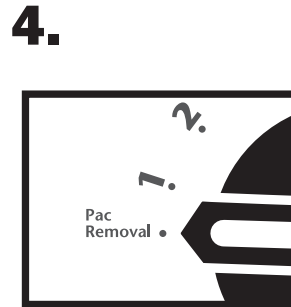


IMPORTANT: Remove and read the information card.

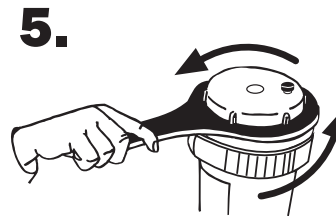
Please note: Complete instructions for inserting a POOL FROG® Mineral Reservoir, FROG BAM® and POOL FROG® Bac Pac are included inside the POOL FROG® Mineral Reservoir

3.

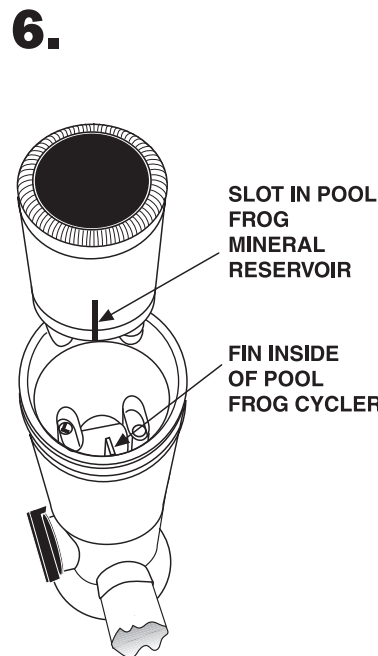
USE ONLY the factory recommended replacement POOL FROG® Mineral Reservoir, FROG BAM® and POOL FROG® Bac Pac. **DO NOT USE** bulk chemical tablets in the POOL FROG® Cycler or put anything inside the POOL FROG® Cycler, other than the appropriate POOL FROG® product as directed in the product instructions. Use of any other product could result in damage to pool equipment or surface, unsafe pool conditions, fire or explosion. Warranty will be void if the correct POOL FROG® Mineral Reservoir, FROG BAM® and POOL FROG® Bac Pac are not used.



Turn off pump. Turn dial to Pac Removal. This reduces the flow of water into the unit when the cap is open.



Use the cap tool included with POOL FROG® Cycler to loosen cap by hitting the handle with the flat of your hand counter clockwise. Stand back to avoid inhaling chlorine fumes from the POOL FROG® Bac Pac.



Find slot on side of POOL FROG® Mineral Reservoir and line up with fin inside the POOL FROG® Cycler. Lower POOL FROG® Mineral Reservoir into POOL FROG® Cycler until secure.

Using FROG BAM® for an Algae Protection Guarantee

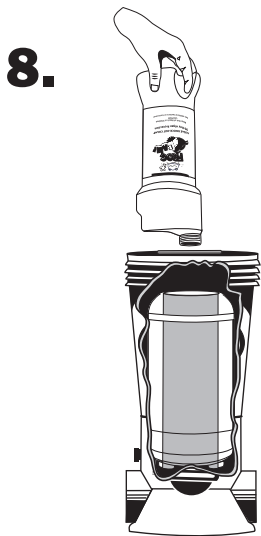
If you are not using FROG BAM, proceed to Step 15.
See FROG BAM® product labeling for complete directions for use (EPA Reg. No. 53735-9).

For a preventive dose add:
• One FROG BAM® for pools up to 15,000 gallons.
• Two FROG BAM® for pools between 15,000 and 30,000 gallons.

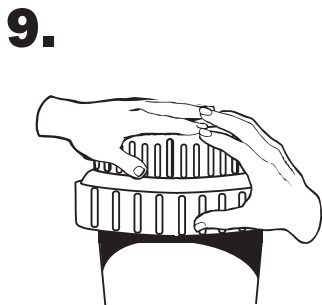
***NOTE:** If using directly after a shock treatment, test the water first to ensure the pH is in the proper range of 7.2-7.8 and the chlorine level is no more than 4.0 ppm. Avoid using other chemicals until this product has been circulated (filtered) for at least 24 hours.



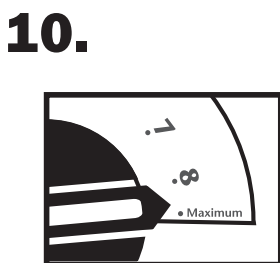
Remove cap from FROG BAM® without removing seal.



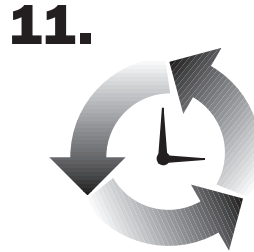
Insert upside down into center of POOL FROG® Mineral Reservoir pushing down firmly on key to puncture seal.



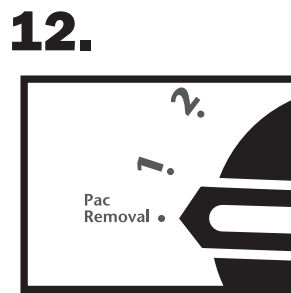
Replace cap by hand only. **DO NOT OVER TIGHTEN.**



Turn control dial on POOL FROG® Cyclor to Maximum.



Turn pump on for 90 minutes allowing FROG BAM® to circulate through pool.



To remove FROG BAM®, turn pump off. Turn dial to Pac Removal.



Remove POOL FROG® Cyclor cap.



Lift FROG BAM® up and allow any water in the container to drain through the POOL FROG® Cyclor before discarding in trash.

NOTE: If water shows more than a hint of blue inside POOL FROG® Cyclor, replace the POOL FROG® Cyclor cap, turn dial to Maximum and run the pump for one minute.

14a. If pool size requires additional FROG BAM®, repeat steps 7-14.

14b. When water is clear in POOL FROG® Cyclor, proceed to inserting POOL FROG® Bac Pac.

Using the POOL FROG® Bac Pac



USE ONLY the factory recommended replacement POOL FROG® Bac Pac. (See label.) DO NOT USE any other pac or bulk chemical tablets in the POOL FROG® Cycler. Use of any other product could result in over chlorination, bleached liners, unsafe pool conditions, fire or explosion. Warranty will be void if the correct pac is not used.

15.



POOL FROG® Bac Pac recommended to assure up to 50% reduction in chlorine use*. POOL FROG® Bac Pac sold separately. (EPA Reg. No. 53735-2)

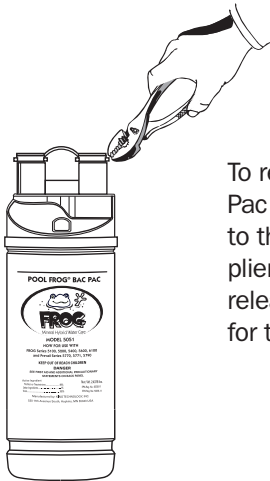
**Compared to the minimum EPA recommended chlorine level of 1.0 ppm for a stabilized swimming pool.*

16.



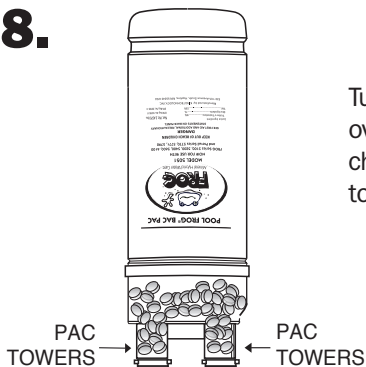
Avoid sparks, open flame or smoking when handling the POOL FROG® Bac Pac.

17.



To remove POOL FROG® Bac Pac colored caps, grab on to the lip of one cap with a pliers and pull up until cap releases. Repeat the process for the other cap.

18.



Turn POOL FROG® Bac Pac over and shake slightly until chlorine tablets fall into tower areas.

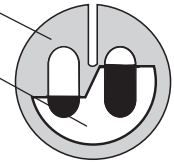
19.



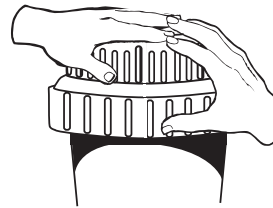
Line up the small leg of the POOL FROG® Bac Pac with the small opening in the POOL FROG® Mineral Reservoir and the large leg with the large opening. Lower POOL FROG® Bac Pac into POOL FROG® Mineral Reservoir until secure.

POOL FROG
MINERAL
RESERVOIR

POOL FROG
BAC PAC



20.



Replace cap by hand only. DO NOT OVER TIGHTEN.



DO NOT USE CAP TOOL TO TIGHTEN CAP. Use for removal only.



The chlorine pacs are made of HDPE plastic. Non-refillable container. Do not reuse or refill this container. Offer for recycling if available. Rinse thoroughly before recycling or discarding in trash.

21.



Mark your calendar for the six month replacement of the POOL FROG® Mineral Reservoir, 90-day replacement of FROG BAM® and approximate replacement times for the POOL FROG® Bac Pac. Once wetted, the time-released mineral coating of the POOL FROG® Mineral

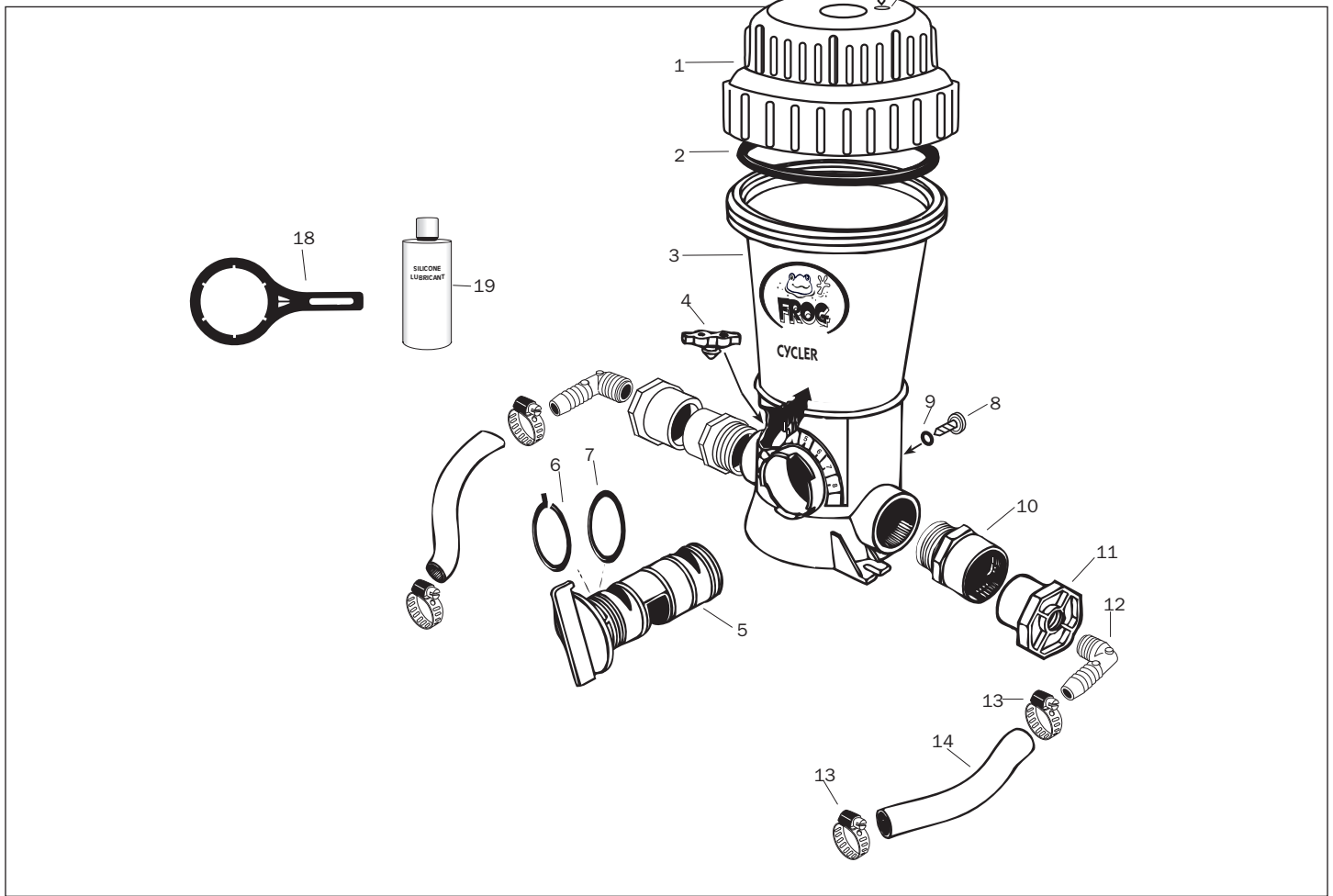
Reservoir is effective up to 6 consecutive months or one pool season whichever is shorter. After that time, even if you hear the spent media inside, it is no longer effective and must be replaced.

Troubleshooting

For more in-depth troubleshooting, go to www.kingtechnology.com

Problem	Remedy		
<p>1. What do I do if the water looks cloudy?</p>	<p>1. Make sure your filtration system is working properly (i.e. clean filter, skimmer and pump basket).</p> <p>2. Make sure circulation time is adequate – increase pump</p>	<p>time if not.</p> <p>3. Make sure the pool is properly balanced (see page 4).</p> <p>4. Shock the water to eliminate build up of any organic matter.</p>	<p>5. Make sure pool has a free chlorine reading of 0.5 to 1.0 ppm.</p> <p>6. Check with your dealer for more information.</p>
<p>2. What do I do if the water turns color?</p>	<p>1. Metals in the fill water may have been oxidized. Have the pool tested. Shock the pool and clean the filter until water clarity returns.</p>	<p>2. Algae may be trying to form – shock the pool, increase circulation time if needed and clean the filter.</p>	<p>3. Check with your dealer for more information.</p>
<p>3. What do I do if algae forms in or on my pool?</p>	<p>1. Use a nonmetallic (polyquat) algaecide per the directions on the bottle and brush the sides of the pool often.</p>	<p>2. Clean the filter and shock the pool with chlorine daily until water clarity returns.</p> <p>3. If you are in an area of the country that struggles with algae growth, see your dealer regarding a 90-day Algae</p>	<p>Protection Guarantee using FROG BAM® . See product hang tag for guarantee details.</p> <p>4. Check with your dealer for more information.</p>
<p>4. What do I do if I am under chlorinating with the POOL FROG® Bac Pac?</p>	<p>1. If you are unable to maintain 0.5 to 1.0 ppm, first make sure there are chlorine tablets in the tower areas of the POOL FROG® Bac Pac and it is installed properly. If a correction was made, test the water in 24 hours.</p> <p>2. If still low, turn the dial up one setting and test the water again in 24 hours. Continue raising the setting by one increment each day</p>	<p>until the proper reading is achieved.</p> <p>3. Shock the pool if the reading has been lower than 0.5 ppm for more than one day.</p> <p>4. Make sure pump run time is at least 6 hours on high speed (40 gpm or higher) or if not, bleed the air from the cap knob (see page 6 for directions).</p>	<p>5. Contact your dealer to have your back pressure tested to ensure it is at least 4 psi.</p> <p>6. Check for a suction side leak by looking for air bubbles in your pump basket or at the return jet. Contact dealer for help in correcting this situation.</p> <p>7. Contact King Technology's Customer Service Department at 800-222-0169.</p>
<p>5. What do I do if I am over chlorinating with the POOL FROG® Bac Pac?</p>	<p>1. If the chlorine reading is over 3.0 ppm, remove the POOL FROG® Bac Pac from the POOL FROG® Mineral Reservoir and test the water daily until the reading is down to 1.0 ppm.</p> <p>2. Reinsert the POOL FROG® Bac Pac, lower the dial one setting and test the water again in 24 hours. If the reading has risen, lower the dial one setting again. Continue this process until</p>	<p>proper reading is achieved.</p> <p>3. If over-chlorinating at the lowest possible setting, consider decreasing the circulation time. Depending on your pump size, you may be circulating the water more than is necessary.</p> <p>4. Contact your dealer to have your back pressure tested. If over 8 psi consider a larger eye-ball fitting in the return jet.</p>	<p>5. Check to see if the pressure relief valve is loose or missing and replace. It is a clear plastic piece approximately 1" long installed inside near the base. If loose or missing, it can provide another avenue for water to reach the chlorine.</p> <p>6. Contact King Technology's Customer Service Department at 800-222-0169.</p>

Parts List Models 5400/5430



INCLUDED WITH THE POOL FROG® Model 5400

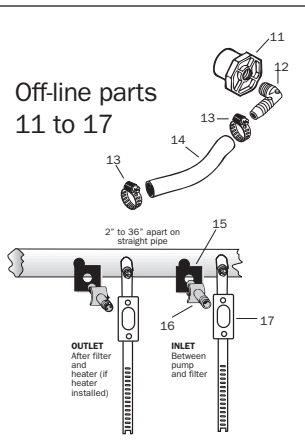
REF. #	DESCRIPTION	QTY. INCLUDED
1 & 2	Cap w/O-Ring	1
3	Body	1
4	Pressure Relief Valve	1
5, 6, 7	Control Dial with O-Ring & Snap Ring	1
8 & 9	Knob with O-Ring	2
10	2" Male Adapter	2
18	Cap/Control Dial Tool	1
19	Silicone Lubricant	1

REPLACEMENT PARTS FOR POOL FROG® Model 5400

REF. #	PART NUMBER	DESCRIPTION
1 & 2	01-22-9412	Cap w/O-Ring
2	01-22-9920	Cap O-Ring
4	01-22-9480	Pressure Relief Valve
5, 6, 7	01-22-9440	Control Dial with O-Ring & Snap Ring
6 & 7	01-22-9450	Control Dial O-Ring Kit
8 & 9	01-22-9940	Knob with O-Ring
10	01-22-9490	2" Male Adapter
18	01-22-8870	Cap/Control Dial Tool
19	01-22-9971	Silicone Lubricant

OFF-LINE PARTS Included with Model 5430

REF. #	DESCRIPTION	QTY. INCLUDED
11*	2" x 1/2" Bushing	2
12	90° Elbow	2
13	Small Clamp	4
14	6' PVC Tubing	1
15	Scoop Gasket	2
16	Venturi Scoop	2
17	Scoop Clamp	2

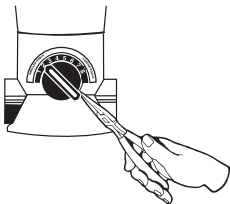



REPLACEMENT PARTS FOR OFF-LINE Model 5430

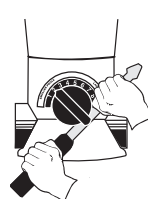
REF. #	PART NUMBER	DESCRIPTION
11*	01-22-8620	2" x 1/2" Bushing
12	01-22-7800	90° Elbow
13	01-22-7690	Small Clamp
14	01-22-7700	6' PVC Tubing
15	01-22-7850	Scoop Gasket
16	01-22-7790	Venturi Scoop
17	01-22-7910	Scoop Clamp

POOL FROG® Cyclers Maintenance

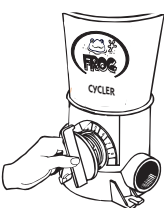
Replacing the Control Dial O-Rings

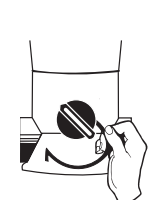
1.  Using a needle nose pliers, find the snap ring tail located at approximately the five o'clock position under the control dial.


2.  Pull down and out of the groove.

3.  Using a large screwdriver, loosen the control dial. Carefully pry the dial until it pulls out.

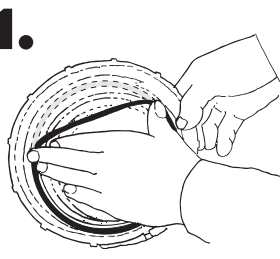
4.  Carefully replace the rubber o-ring without stretching it. Apply silicone lubricant, that came with your POOL FROG® Cyclers, on o-ring.

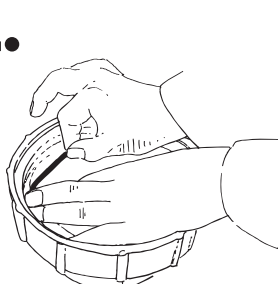
5.  Push control dial completely into the housing and turn the dial to setting 2.


6.  Insert the non-lipped end of snap ring into the groove opening beginning at the 5 o'clock position and push it up so that it threads itself around the control dial.

7.  Using a small screwdriver or pointed tool to help guide it, make sure the snap ring stays in the groove as it is inserted.


Replacing Cap O-Ring

1.  Hold cap in front of you upside down with the o-ring groove facing up. Place one end of o-ring into cap groove at the point closest to you. Hold o-ring down with the thumb and index finger of one hand.

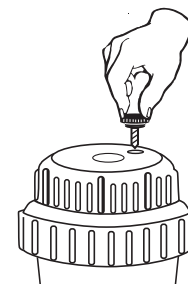
2.  Take hold of the far end of the o-ring with the thumb and index finger of the other hand. Roll o-ring slightly back towards you as you stretch the o-ring into the remainder of the cap groove.

3.  Lubricate o-ring often with silicone lubricant that came with your POOL FROG® Cyclers. DO NOT USE petroleum based lubricants.

Replacing Knobs

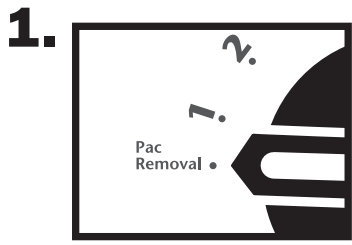
 Replace knob in back or on cap of POOL FROG® Cyclers by unscrewing old one and screwing in new one.

Back of Cycler

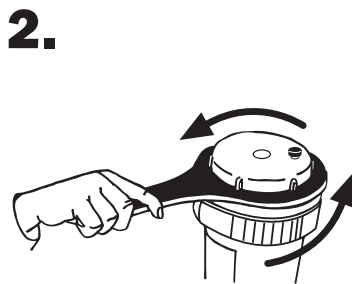


Top of cap

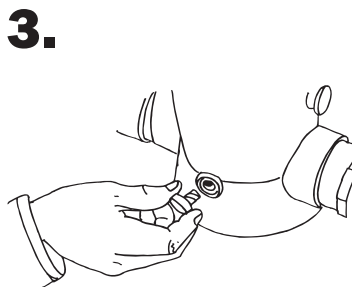
Winterizing



Turn pump off and turn dial to Pac Removal.



Remove cap.



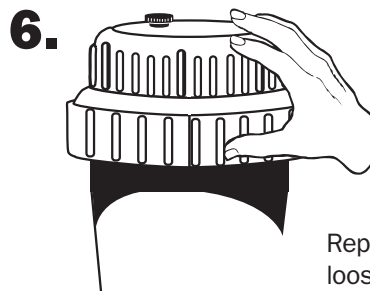
Unscrew knob in the back of POOL FROG® Cycler. Allow all water to drain.



If POOL FROG® Bac Pac still contains chlorine, wrap in plastic bag and store in shed or cool well-ventilated location away from children, pets, cars, motorcycles or anything metal that can rust, pit, etc. Make sure POOL FROG® Bac Pac is away from open flame.



Remove the POOL FROG® Mineral Reservoir and discard in trash. Even if you hear spent minerals inside, it is no longer effective.

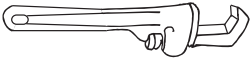


Replace the cap and knob loosely.

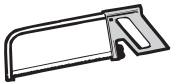
In-line Installation - 5400 Model

TOOLS NEEDED

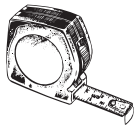
Pipe Wrench



Hacksaw

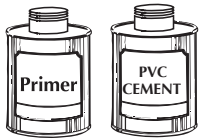


Tape Measure



MATERIALS NEEDED

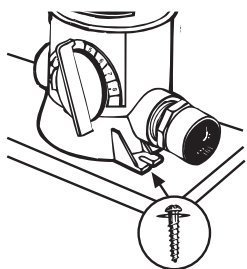
Primer and PVC Cement



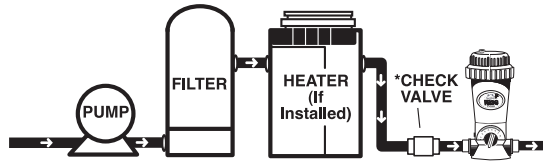
RECOMMENDED

Corrosion Resistant Check Valve

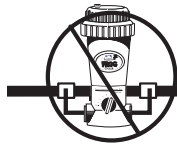
#10 x 1 1/4" Phillips Pan Head Screws with Washers



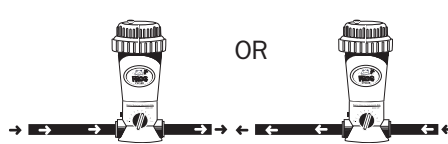
Use Phillips pan head screws through the mounting holes at the POOL FROG® Cyclor base to secure the POOL FROG® Cyclor into a treated wood base.



Do NOT install in copper pipe if using POOL FROG® Bac Pac as chemical corrosion occurs.



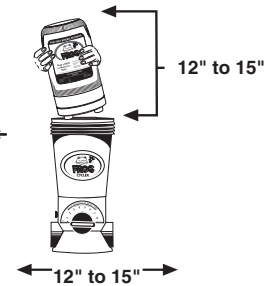
Do NOT install this POOL FROG® Cyclor off-line.



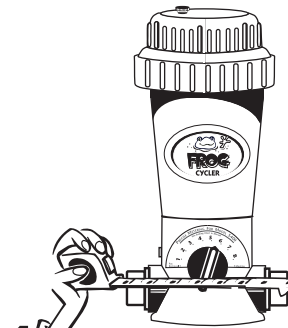
Bi-flow valve design allows water flow in either direction.



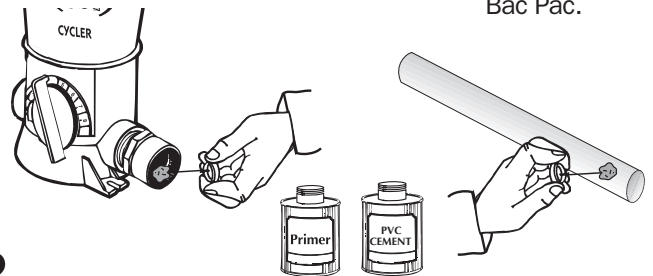
- Install after all equipment and as far as possible from heater.
- Any additional sanitizing equipment that is installed with FROG® must be installed after FROG® (never before) on the return line to the pool.



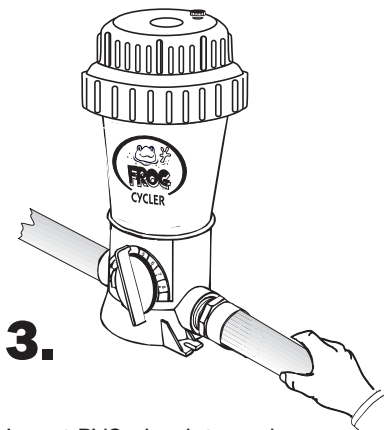
Leave 12" to 15" above and around POOL FROG® Cyclor to allow room for easy replacement of POOL FROG® Mineral Reservoir and POOL FROG® Bac Pac.



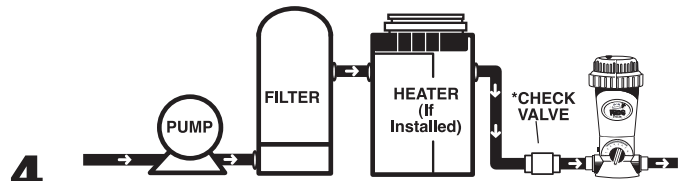
1. Measure the distance between POOL FROG® Cyclor male adapters and cut out a section of pipe 3" less than that dimension.



2. Following Primer directions, brush Primer on the inside of the male adapters and to ends of pipe. Repeat this process with PVC cement following directions on that product.



3. Insert PVC pipe into male adapters with a twisting action. Hold in place 5 to 10 seconds to bond.



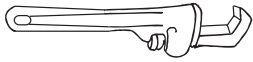
4. If using a POOL FROG® Bac Pac, isolating the POOL FROG® Cyclor by installing a corrosion resistant check valve is recommended.

TOOLS NEEDED

Screwdriver



Pipe Wrench



Battery Operated Drill with 5/8" or 19/32" Bit

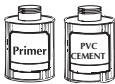


MATERIALS NEEDED

Pipe Thread Sealant



Primer and PVC Cement



OFF-LINE KIT

Included with the POOL FROG® Cyclor

Two Male Adapters



Two Reducer Bushings



Two 90 Degree Elbows



Four Hose Clamps



6' of Tubing



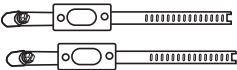
Two Scoops



Two Scoop Gaskets



Two Scoop Clamps



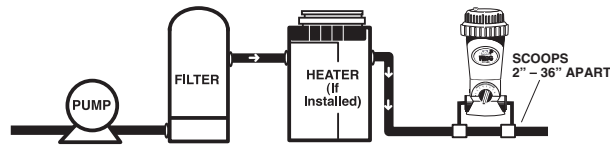
RECOMMENDED

Corrosion Resistant Check Valve

#10 x 1 1/4" Phillips Pan Head Screws with Washers



Off-line Installation - 5430 Model



When insufficient room for an in-line application, install off-line in straight pipe with scoops between 2" - 36" apart.



Do NOT install an off-line POOL FROG® Cyclor in-line as this POOL FROG® Cyclor is different than an in-line unit.



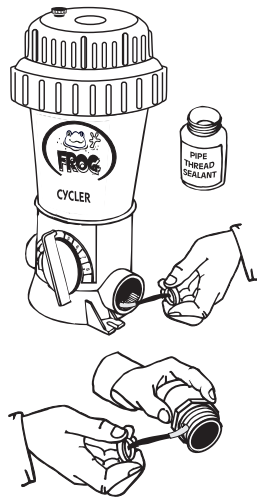
OR



Bi-flow valve design allows water flow in either direction.

- Install after all equipment and as far as possible from heater.
- Any additional sanitizing equipment that is installed after FROG® must be installed after FROG® (never before) on the return line to the pool.

1.



Following pipe thread sealant directions, brush sealant onto POOL FROG® threads in both ports and on both male adapters.

DO NOT USE PIPE THREAD TAPE as the threads on these units are not suitable for this use and leaking or fitting failure could result.

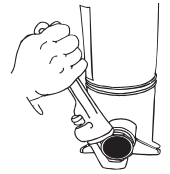


2.

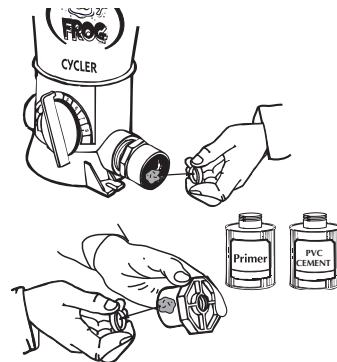


Screw a male adapter into each port of POOL FROG® Cyclor and hand tighten.

Completely tighten turning 1 to 2 revolutions with a wrench.

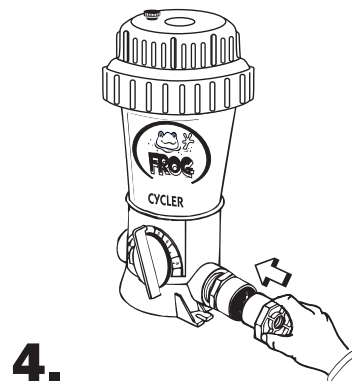


DO NOT OVER TIGHTEN.



3.

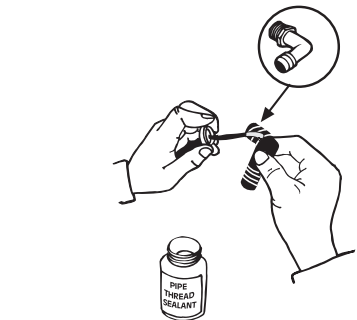
Following Primer directions, brush Primer on reducer bushings and inside of male adapters. Repeat this process with PVC cement following directions on that product.



4.

Insert reducer bushing into male adapter on both sides with a twisting action. Hold in place 5 to 10 seconds to bond.

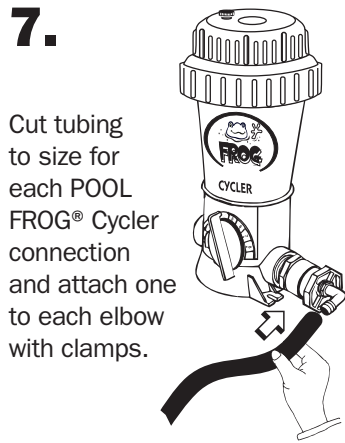
5.



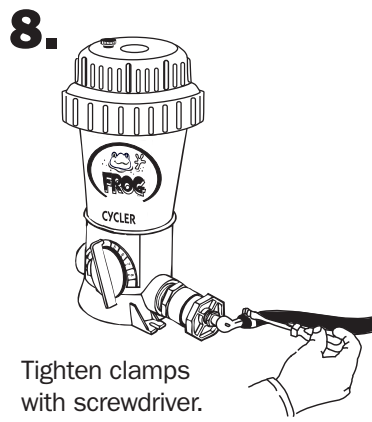
Following pipe thread sealant directions, brush sealant onto elbow threads.



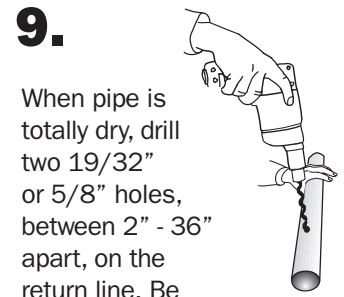
Screw elbow into reducer bushings on both sides.



Cut tubing to size for each POOL FROG® Cyler connection and attach one to each elbow with clamps.



Tighten clamps with screwdriver.

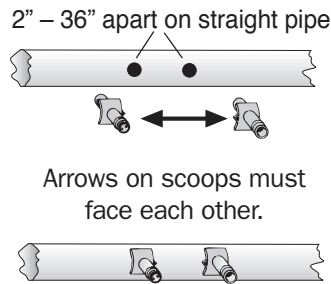


When pipe is totally dry, drill two 19/32" or 5/8" holes, between 2" - 36" apart, on the return line. Be careful not to go through other side of pipe.

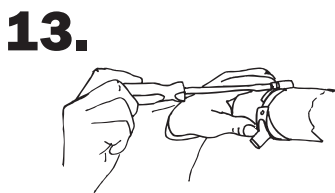
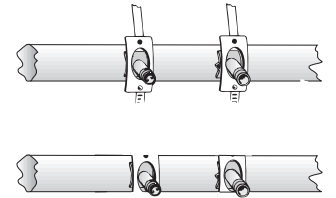


Attach a gasket to each scoop.

11. Place scoops inside holes so the inlet scoop faces the water flow and the outlet scoop faces away from the water flow. Scoop arrows should be facing each other when correct.

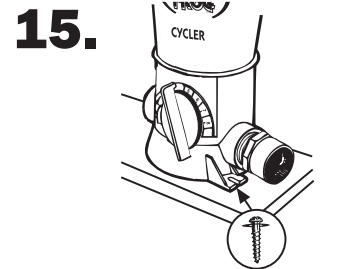
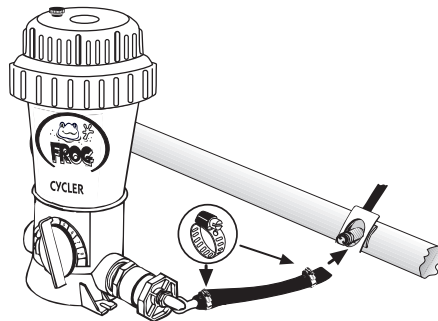


12. Attach scoop clamps over the scoops and around the pipe.

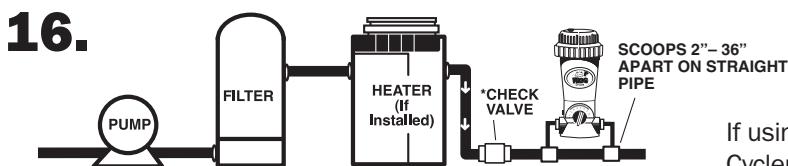


Tighten scoop clamps with a screwdriver.

14. Attach each hose to venturi scoop male nipple with a small clamp and tighten with screwdriver.



For best results use Phillips pan head screws through the mounting holes at the POOL FROG® Cyler base to secure the POOL FROG® Cyler into a treated wood base.

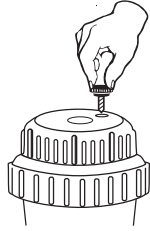


If using the POOL FROG® Bac Pac, isolating the POOL FROG® Cyler by installing a corrosion resistant check valve is recommended.

For Proper Performance

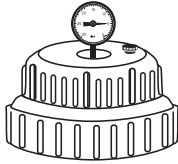
1) If using a multi-speed pump, run pump for at least 6 hours per day at high speed (at least 40 gpm).

If the pump will run on low speed 24 hours per day or less than 6 hours per day on high speed, you must bleed the air while the pump is on by unscrewing the cap knob until water appears. Then screw the knob back on. Repeat this process each time the cap is removed for any reason.



2) Install system with 4-8 psi back pressure.

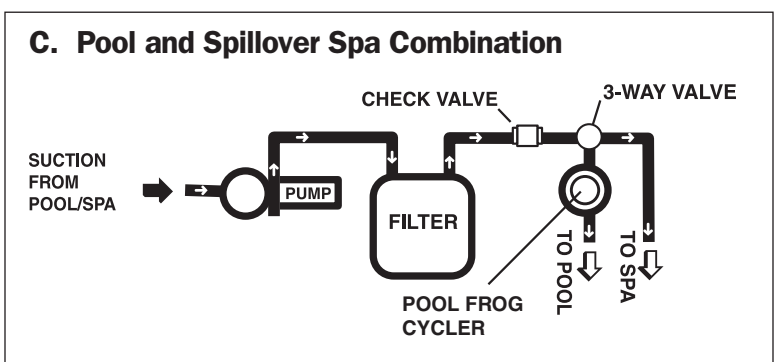
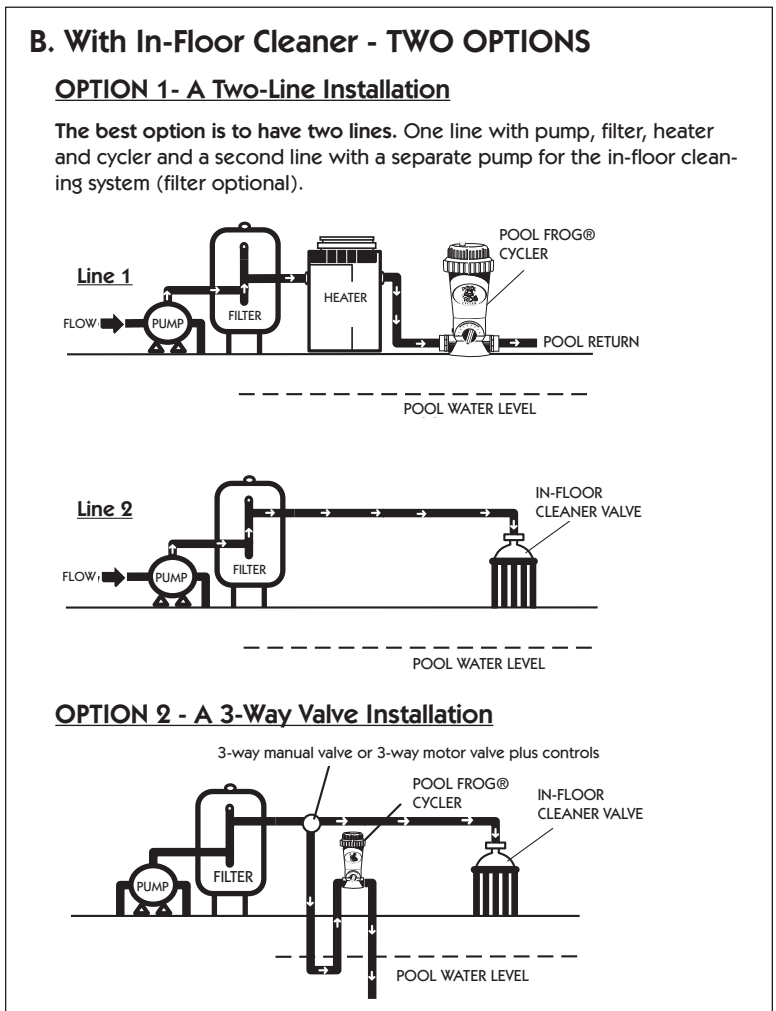
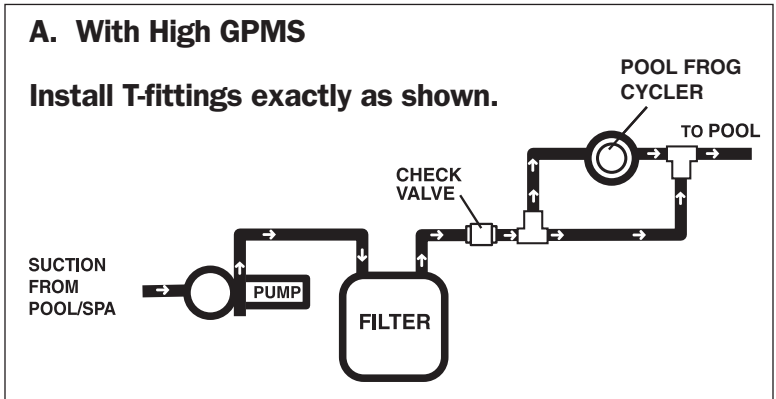
Lower back pressures could result in under chlorination. Adjust eye ball fittings in the return jets to a smaller size to increase back pressure. Contact King Technology at 800-222-0169 for a cap tapped for a pressure gauge to determine back pressure at pool start-up.



3) Special installation:

- If water flow is higher than 80 gpm, see diagram A.
- If an in-floor cleaner is included with pool, see diagram B, with two options. Preferred installation is Option 1 with two separate lines.
- If set-up is a pool and spa combination with common equipment, see diagram C.
- Any additional sanitizing equipment that is installed with FROG® must be installed after FROG® (never before) on the return line to the pool.

NOTE: Over chlorination or damage to the POOL FROG® Cyclor or other equipment could result if these special installations are not used in these situations.



POOL FROG® Cyclor Two-Year Limited Warranty

King Technology, Inc. warrants to the original purchaser this unit will be free from any defects in workmanship and/or material, for a period of two (2) years from the date of original purchase. This warranty covers body, cap and control dial, but specifically excludes o-rings. King Technology at its option may replace any defective parts or the entire unit without charge after it is determined what is needed to correct any deficiency. Replacement parts with the exception of o-rings are warranted for the remainder of the original warranty. To extend the limited warranty from two years to ten years, simply complete the warranty card that came with your unit and return it to King Technology within 30 days of purchase and installation.

1. To obtain warranty service, you must deliver the unit to King Technology or its nearest authorized dealer. Shipping expenses are the purchaser's responsibility. The name of the nearest authorized dealer can be obtained by writing or calling King Technology at the address and telephone number provided below. Proof of purchase is required when requesting warranty service. Purchaser must present the sales receipt or other documentation verifying proof of purchase.

2. This warranty does not cover defects caused by: Modification, alteration, repair or service of the unit contrary to the accompanying instructions; physical abuse to or misuse of the product or operation or installation in a manner contrary to the accompanying instructions. This warranty also excludes all costs arising from the installation, adjustment, removal or replacement of defective units or parts. This warranty also excludes any and all claims arising out of the chemicals used in the product or their characteristics.

3. CAUTION - Read carefully – Failure to follow these instructions will void the warranty. Do not add shock in or near skimmer.

A. This unit is not designed for shock treatment of pools. See your pool dealer or distributor for further information concerning shock treatments.

B. Control dial settings higher than needed can result in excess sanitizers being discharged into the pool. If the sanitizer level goes unmonitored, it can result in bleaching or discoloration of areas around the pool inlet or in some cases bleaching or discoloration of the entire pool liner or paint.

C. Excess trichlor in the pool can create health hazards to bathers. Consult each chemical manufacturer's warnings and cautions for specifics.

D. Misuse or failure to use the proper POOL FROG® Mineral Reservoir and POOL FROG® Bac Pac may cause damage to equipment or personal injury. This warranty will be null and void, if this unit is not used with the recommended POOL FROG® Mineral Reservoir and POOL FROG® Bac Pac.

4. This warranty is the exclusive warranty for the POOL FROG® Cyclor. This warranty is not transferable. **KING TECHNOLOGY MAKES NO REPRESENTATION OR WARRANTY OF ANY KIND, EXPRESS OR IMPLIED, AS TO MERCHANTABILITY, FITNESS FOR A PARTICULAR PURPOSE OR ANY OTHER MATTER CONCERNING THE POOL FROG® CYCLOR.** Any express warranty not provided herein, and any remedy for breach of contract but which for this provision might arise by implication or operation of law is hereby excluded and disclaimed. THE EXCLUSIVE REMEDY FOR ANY CUSTOMER IS THE REPAIR OR REPLACEMENT OF THE UNIT, AND THE RECOVERY OF DAMAGES WILL NOT EXCEED THE PURCHASE PRICE OF THE UNIT. IN NO EVENT WILL KING TECHNOLOGY BE LIABLE FOR ANY INCIDENTAL, CONSEQUENTIAL, SPECIAL OR PUNITIVE DAMAGES FROM ANY CAUSE.

5. Under no circumstance shall King Technology be liable to purchaser or any other person for any damage or loss incurred because of any chemicals used in the product or their physical characteristics, or interruption of service of the product, or any resulting special, incidental or consequential damages or losses. Some states do not allow the exclusion or limitation of incidental consequential damages, so the above limitation or exclusion may not apply to you.



Manufactured by: King Technology, Inc.

530 11th Ave S, Hopkins, MN 55343 U.S.A.
952-933-6118 • 800-222-0169 • FAX 952-933-2206
www.kingtechnology.com

FROG®, POOL FROG®, XL PRO®, SPA FROG®, INSTANT FROG®, FILTER FROG®, FROG BAM®, NEW WATER® and SANI-KING® are registered trademarks of King Technology, Inc.

Made in U.S.A.

U.S. Patents 6,190,547; 6,210,566; 6,217,892; 6,383,507; 6,544,415; 6,551,609; 6,652,871 and other U.S. and Foreign patents pending.

20-48-0164E 553031343R7N